



DENK ASSOCIATES
CONSULTING ENGINEERS

503 EAST 200th STREET
CLEVELAND, OHIO 44119
PHONE: 216-531-8880
EMAIL: info@denkassoc.com

MENTOR LIGHTING REPLACEMENT

Addendum #1 7-28-2025

This Addendum becomes as fully a part of the previously issued Quote Package as if originally issued therewith or originally contained therein.

The Addendum includes additions to, deductions from, changes and substitutions in, or clarifications and emphasis on parts or requirements of the drawings and specifications pertaining to the project.

Contractors shall familiarize themselves with Addendum items and they shall be held responsible for complete knowledge of same.

BIDDING DOCUMENT – PAGE BF.10

IV. PROPOSAL - CONTRACT FORM

ITEM NO.	DESCRIPTION	TOTAL PRICE
1.	MENTOR MUNICIPAL MAINTENANCE FACILITY & FIRE STATION #5 LIGHTING REPLACEMENT TOTAL	\$ _____
	Funding sources require the total bid cost above to be broken down for work performed in the following areas	
	MF-1, PARTIAL HEATED STORAGE AND SERVICE AREA LIGHTING PLAN	\$ _____
	MF-2, UNHEATED STORAGE AND SERVICE AREA LIGHTING PLAN	\$ _____
	MF-3, ADMINISTRATION AREA LIGHTING PLAN	\$ _____
	FS-1, LIVING QUARTERS FIRST LEVEL LIGHTING PLAN	\$ _____
	FS-2, ADMINISTRATION FIRST LEVEL LIGHTING PLAN	\$ _____
	FS-3, SECOND LEVEL AND BASEMENT LIGHTING PLAN	\$ _____

E-101 – PARTIAL HEATED STORAGE AND SERVICE AREA LIGHTING PLAN

General note added

IF SUBMITTING A SUBSTITUTE FIXTURE OTHER THAN SPECIFIED FOR

- HEATED VEH. STORAGE, 122
- TRUCK WASH, 141
- CARPENTRY SHOP, 137

SUBMIT PHOTOMETRIC AND SUBSTITUTED FIXTURES WITH BID TO BE CONSIDERED

Carpentry Shop 137 fixtures revised to MC.

E-102 – UNHEATED STORAGE AND SERVICE AREA LIGHTING PLAN

General note added

IF SUBMITTING A SUBSTITUTE FIXTURE OTHER THAN SPECIFIED FOR

- UNHEATED VEH. STORAGE, 123
- MAINTENANCE SHOP, 135
- MAINTENANCE STORAGE, 135A
- COMMON WORK AREA 134
- SMALL ENGINE REPAIR, 123

SUBMIT PHOTOMETRIC AND SUBSTITUTED FIXTURES WITH BID TO BE CONSIDERED

E-203 – SECOND LEVEL AND BASEMENT LIGHTING PLAN

2X4s Revised to be FA in E.O.C. / Training Room 005, Corridor 002, and Media Room 006.

E-601 – LIGHTING FIXTURE SCHEDULES AND NOTES

General note added

MAINTENANCE FACILITY & FIRE STATION GENERAL NOTES:

1. CONTRACTOR SHALL WALK EACH SPACE TO CONFIRM EXISTING LIGHTING LAYOUT AND FIXTURES PRIOR TO ORDER.
2. CONTRACTOR SHALL ADVISE ENGINEER OF ANY DISCREPANCIES THAT ARE NOTED.
3. CONTRACTOR SHALL REVIEW THE NOTED BID ITEMS AND MAKE SURE THE FIXTURES AND AREAS ARE INCLUDED PER THE BIDDING DOCUMENTS AND BIDDING ITEMS.

Fixture FP revised to be 11,500 LM

END OF ADDENDUM #1

IV. PROPOSAL – CONTRACT FORM

The undersigned hereby proposes to furnish the City of Mentor, Ohio, the following items, in accordance with the specifications and upon the terms and conditions of this proposal, providing this proposal or any part hereof is accepted as a contract by the City of Mentor.

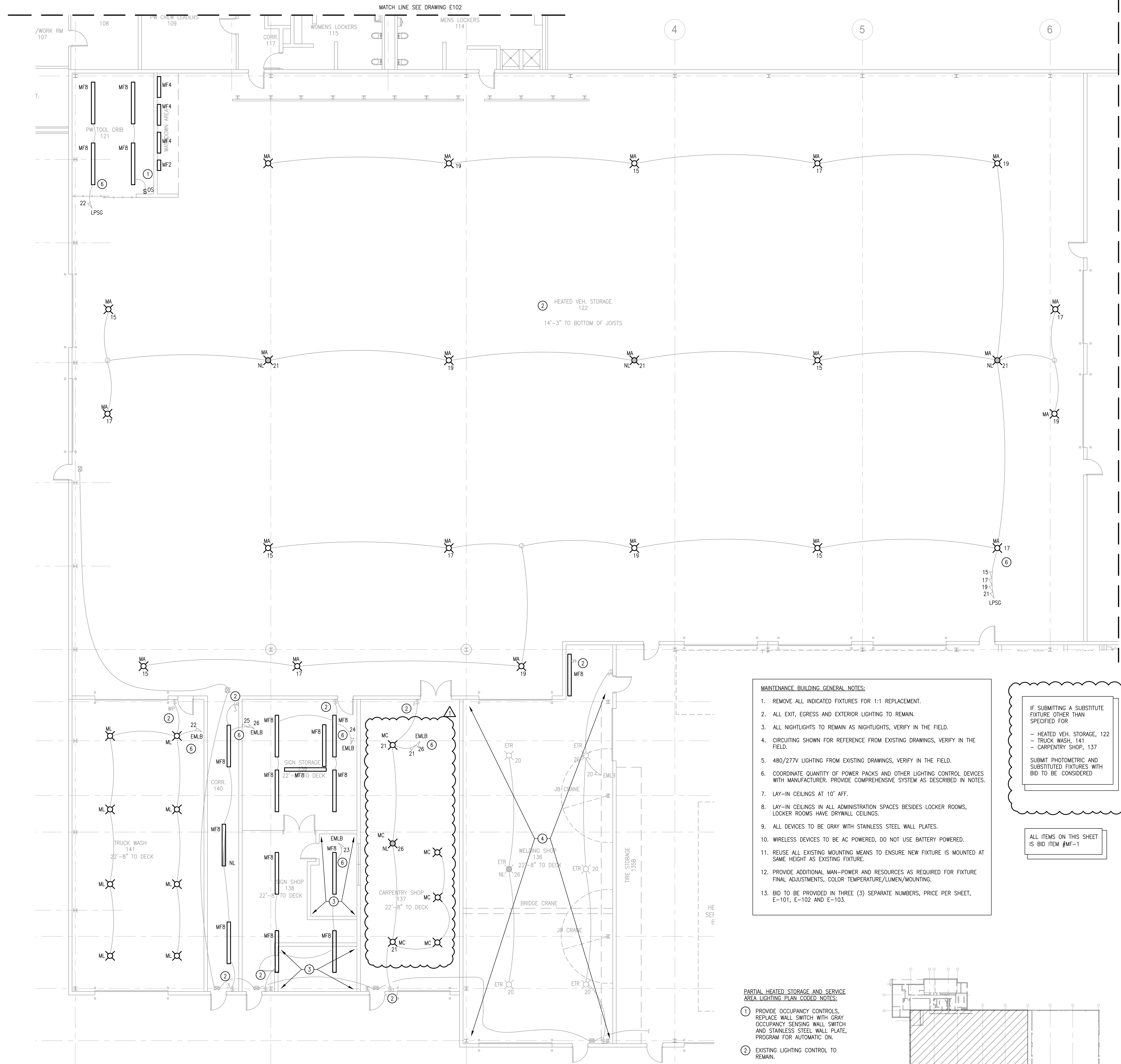
<u>ITEM NO.</u>	<u>DESCRIPTION</u>	<u>TOTAL PRICE</u>
1.	MENTOR MUNICIPAL MAINTENANCE FACILITY & FIRE STATION #5 LIGHTING REPLACEMENT TOTAL	\$ _____
	Funding sources require the total bid cost above to be broken down for work performed in the following areas	
	MF-1, PARTIAL HEATED STORAGE AND SERVICE AREA LIGHTING PLAN	\$ _____
	MF-2, UNHEATED STORAGE AND SERVICE AREA LIGHTING PLAN	\$ _____
	MF-3, ADMINISTRATION AREA LIGHTING PLAN	\$ _____
	FS-1, LIVING QUARTERS FIRST LEVEL LIGHTING PLAN	\$ _____
	FS-2, ADMINISTRATION FIRST LEVEL LIGHTING PLAN	\$ _____
	FS-3, SECOND LEVEL AND BASEMENT LIGHTING PLAN	\$ _____

The Bidder hereby acknowledges receipt of following addenda:

Addendum No. _____ _____ _____ _____

Date: _____ _____ _____ _____

CONDITIONS: The Instructions to Bidders and the Specifications are a part of this contract as effectively as though they preceded the signatures of the parties. This contract is not valid until accepted and signed by the City of Mentor.



SIGN LAMINATION ROOM LIGHTING PLAN
Scale 1/8" = 1'0"

PARTIAL HEATED STORAGE AND SERVICE AREA LIGHTING PLAN
Scale 1/8" = 1'0"

- MAINTENANCE BUILDING GENERAL NOTES:**
1. REMOVE ALL INDICATED FIXTURES FOR 1:1 REPLACEMENT.
 2. ALL EXIT, EGRESS AND EXTERIOR LIGHTING TO REMAIN.
 3. ALL NIGHTLIGHTS TO REMAIN AS NIGHTLIGHTS, VERIFY IN THE FIELD.
 4. CIRCUITING SHOWN FOR REFERENCE FROM EXISTING DRAWINGS, VERIFY IN THE FIELD.
 5. 480/277V LIGHTING FROM EXISTING DRAWINGS, VERIFY IN THE FIELD.
 6. COORDINATE QUANTITY OF POWER PACKS AND OTHER LIGHTING CONTROL DEVICES WITH MANUFACTURER. PROVIDE COMPREHENSIVE SYSTEM AS DESCRIBED IN NOTES.
 7. LAY-IN CEILINGS AT 10' AFF.
 8. LAY-IN CEILINGS IN ALL ADMINISTRATION SPACES BESIDES LOCKER ROOMS, LOCKER ROOMS HAVE DRYWALL CEILINGS.
 9. ALL DEVICES TO BE GRAY WITH STAINLESS STEEL WALL PLATES.
 10. WIRELESS DEVICES TO BE AC POWERED, DO NOT USE BATTERY POWERED.
 11. REUSE ALL EXISTING MOUNTING MEANS TO ENSURE NEW FIXTURE IS MOUNTED AT SAME HEIGHT AS EXISTING FIXTURE.
 12. PROVIDE ADDITIONAL MAN-POWER AND RESOURCES AS REQUIRED FOR FIXTURE FINAL ADJUSTMENTS, COLOR TEMPERATURE/LUMEN/MOUNTING.
 13. BID TO BE PROVIDED IN THREE (3) SEPARATE NUMBERS, PRICE PER SHEET, E-101, E-102 AND E-103.

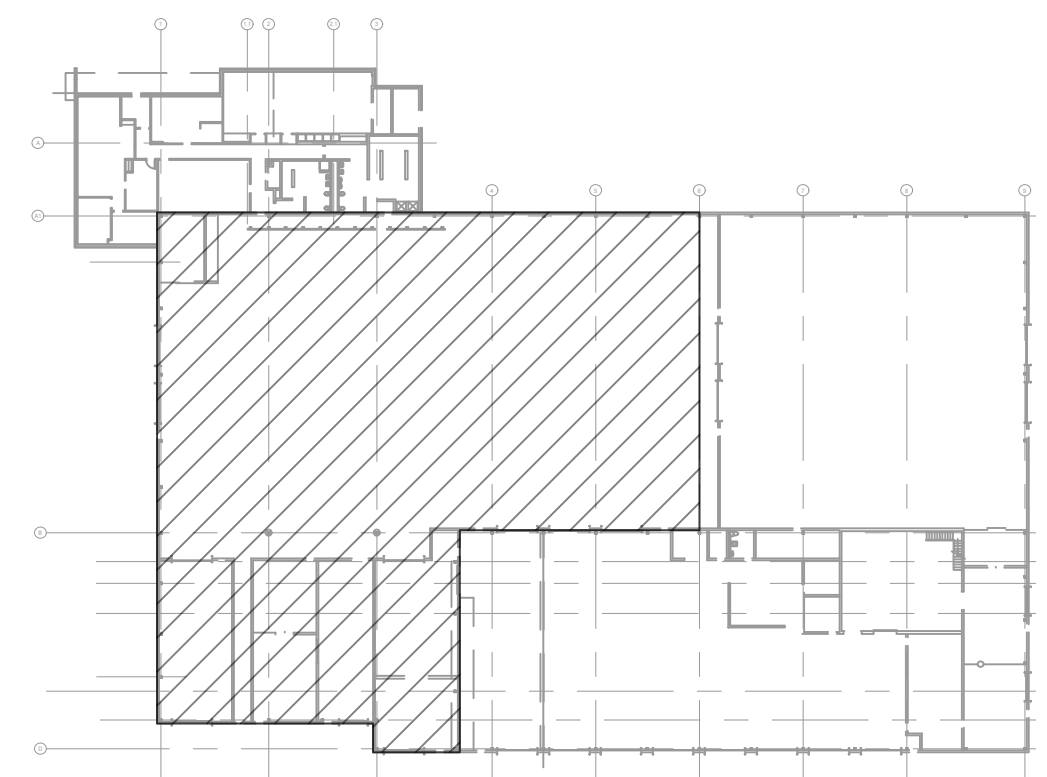
IF SUBMITTING A SUBSTITUTE FIXTURE OTHER THAN SPECIFIED FOR

- HEATED VEH. STORAGE, 122
- TRUCK WASH, 141
- CARPENTRY SHOP, 137

SUBMIT PHOTOMETRIC AND SUBSTITUTED FIXTURES WITH BID TO BE CONSIDERED

ALL ITEMS ON THIS SHEET IS BID ITEM #MF-1

- PARTIAL HEATED STORAGE AND SERVICE AREA LIGHTING PLAN CODED NOTES:**
1. PROVIDE OCCUPANCY CONTROLS, REPLACE WALL SWITCH WITH GRAY OCCUPANCY SENSING WALL SWITCH AND STAINLESS STEEL WALL PLATE, PROGRAM FOR AUTOMATIC ON.
 2. EXISTING LIGHTING CONTROL TO REMAIN.
 3. REFER TO ENLARGED PLAN ON THIS SHEET FOR SIGN LAMINATION ROOM LIGHTING PLAN.
 4. EXISTING LIGHTING CONTROL AND FIXTURES TO REMAIN.
 5. VERIFY FIXTURES, MATCH REPLACEMENT WITH EXISTING.
 6. 277/480V FROM EXISTING DRAWINGS, VERIFY IN THE FIELD PRIOR TO ORDERING.



KEY PLAN

DRAWING
E-101

DATE: 07/28/2025
DESCRIPTION: MENTOR MUNICIPAL MAINTENANCE FACILITY LIGHTING REPLACEMENT
ADDENDUM #1: 1

APPROVED: MTD
DRAWN: MGD
SCALE: 1/8" = 1'0"
JOB NO. 25652

DATE: 7/28/2025

DRAWING
E-101

MENTOR MUNICIPAL MAINTENANCE
FACILITY LIGHTING REPLACEMENT

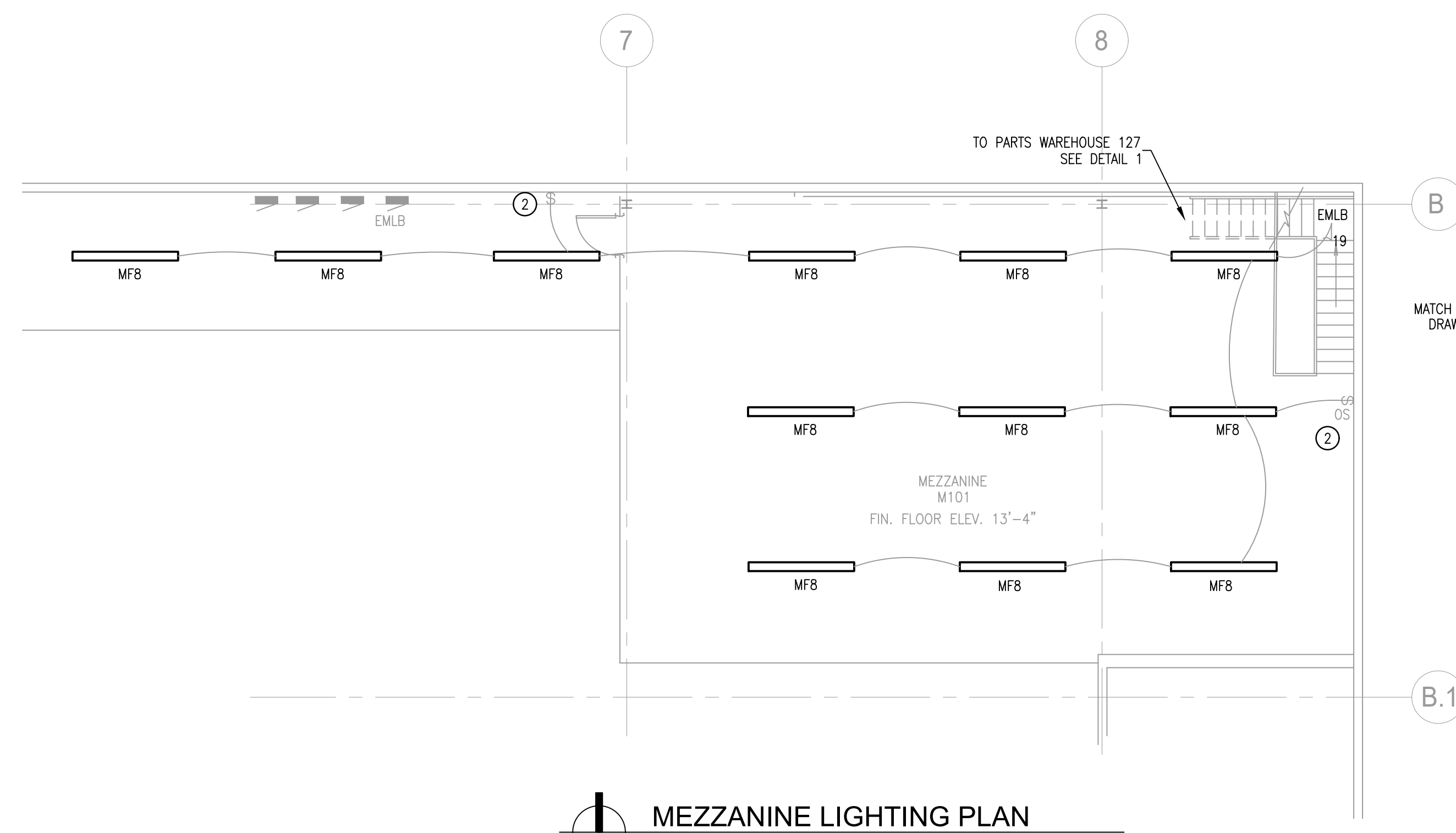
6645 HOPKINS RD.
MENTOR OH 44060



DATE	07/28/2025
DESCRIPTION	
REVISION	
1	

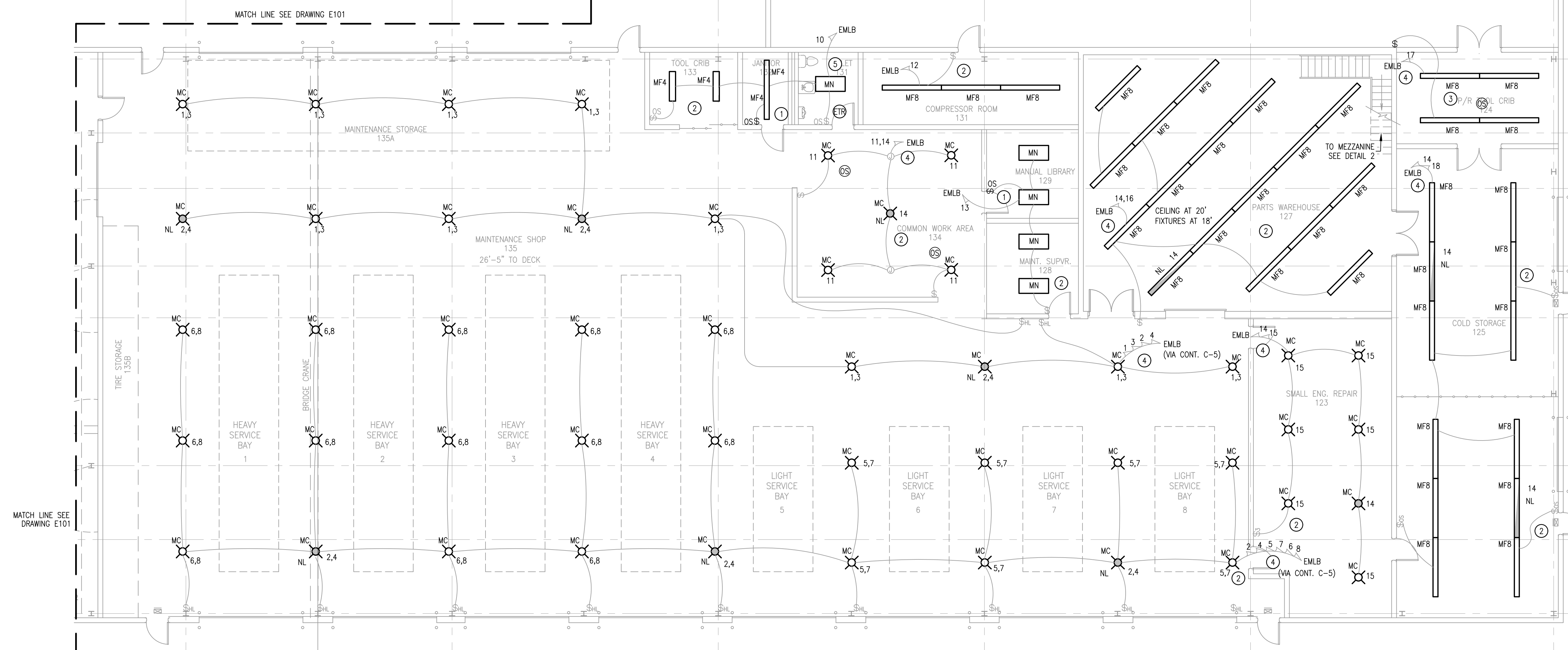
Mentor Municipal Maintenance
Facility Lighting Replacement6645 Hopkins Rd.
Mentor OH 44060DENK ASSOCIATES
CONSULTING ENGINEERS
143 EAST 2000 STREET
CLEVELAND, OH 44115
PHONE: 216.511.8880
EMAIL: info@denkassoc.comUNHEATED STORAGE AND SERVICE
AREA LIGHTING PLAN

APPROVED:	MTD
DRAWN:	MGD
SCALE:	
JOB NO.	25062
DATE:	7/28/2025



MEZZANINE LIGHTING PLAN

Scale: 1/8" = 1'-0"



PARTIAL UNHEATED STORAGE AND SERVICE AREA LIGHTING PLAN

Scale: 1/8" = 1'-0"

0' 2' 4' 8' 16'

KEY PLAN

IF SUBMITTING A SUBSTITUTE
FIXTURE OTHER THAN SPECIFIED
FIXTURE FOR

- UNHEATED VEH. STORAGE, 123
- MAINTENANCE SHOP, 135
- MAINTENANCE STORAGE, 135A
- COMMON WORK AREA, 134
- SMALL ENGINE REPAIR, 123

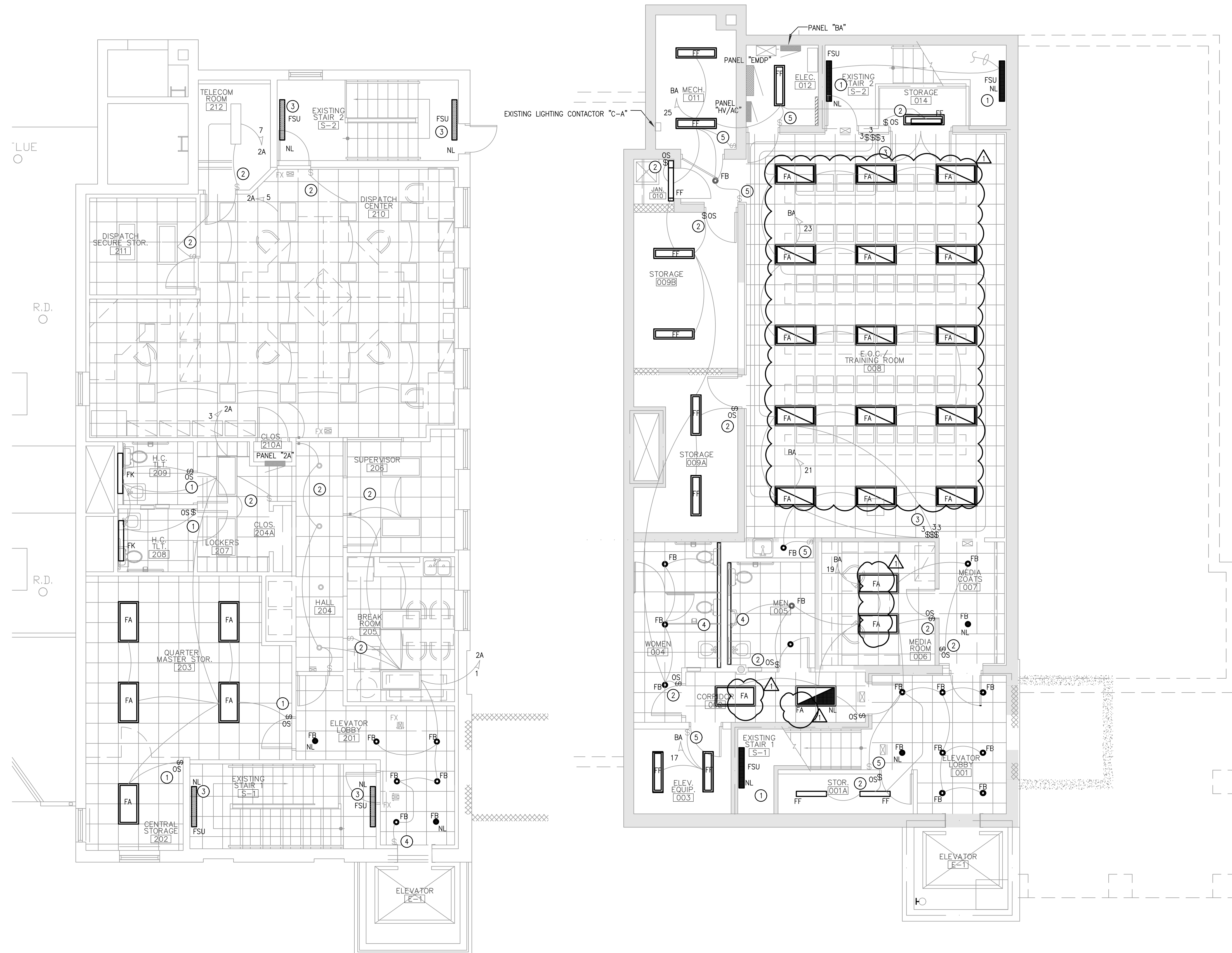
SUBMIT PHOTOMETRIC AND
SUBSTITUTED FIXTURES WITH BID
TO BE CONSIDERED

MAINTENANCE BUILDING GENERAL NOTES:

1. REMOVE ALL INDICATED FIXTURES FOR 1:1 REPLACEMENT.
2. ALL EXIT, EGRESS AND EXTERIOR LIGHTING TO REMAIN.
3. ALL NIGHTLIGHTS TO REMAIN AS NIGHTLIGHTS, VERIFY IN THE FIELD.
4. CIRCUITING SHOWN FOR REFERENCE FROM EXISTING DRAWINGS, VERIFY IN THE FIELD.
5. 480/277V LIGHTING FROM EXISTING DRAWINGS, VERIFY IN THE FIELD.
6. COORDINATE QUANTITY OF POWER PACKS AND OTHER LIGHTING CONTROL DEVICES WITH MANUFACTURER, PROVIDE COMPREHENSIVE SYSTEM AS DESCRIBED IN NOTES.
7. LAY-IN CEILING AT 10' AFF.
8. LAY-IN CEILING IN ALL ADMINISTRATION SPACES BESIDES LOCKER ROOMS, LOCKER ROOMS HAVE DRYWALL CEILING.
9. ALL DEVICES TO BE GRAY WITH STAINLESS STEEL WALL PLATES.
10. WIRELESS DEVICES TO BE AC POWERED, DO NOT USE BATTERY POWERED.
11. REUSE ALL EXISTING MOUNTING MEANS TO ENSURE NEW FIXTURE IS MOUNTED AT SAME HEIGHT AS EXISTING FIXTURE.
12. PROVIDE ADDITIONAL MAN-POWER AND RESOURCES AS REQUIRED FOR FIXTURE FINAL ADJUSTMENTS, COLOR TEMPERATURE/LUMEN/MOUNTING.
13. BID TO BE PROVIDED IN THREE (3) SEPARATE NUMBERS, PRICE PER SHEET, E-101, E-102 AND E-103.

ALL ITEMS ON THIS SHEET
IS BID ITEM #MF-2PARTIAL UNHEATED STORAGE AND SERVICE AREA
LIGHTING PLAN CODED NOTES:

- 1 PROVIDE OCCUPANCY SENSING GRAY WALL SWITCH WITH STAINLESS STEEL COVER PLATE.
- 2 EXISTING LIGHTING CONTROL TO REMAIN.
- 3 PROVIDE OCCUPANCY CONTROLS, VERIFY IN THE FIELD.
- 4 277/480V FROM EXISTING DRAWINGS, VERIFY IN THE FIELD PRIOR TO ORDERING.
- 5 277V FROM EXISTING DRAWINGS, VERIFY IN THE FIELD PRIOR TO ORDERING.



DISPATCH SECOND LEVEL LIGHTING PLAN
SCALE 3/16" = 1'-0"

DISPATCH SECOND LEVEL LIGHTING PLAN CODED NOTES:

- 1 PROVIDE OCCUPANCY SENSING WALL SWITCH.
- 2 EXISTING LIGHT FIXTURES AND CONTROLS TO REMAIN.
- 3 INTEGRAL OCCUPANCY SENSOR IN FIXTURE
- 4 EXISTING CONTROLS TO REMAIN.

FIRE STATION GENERAL NOTES:

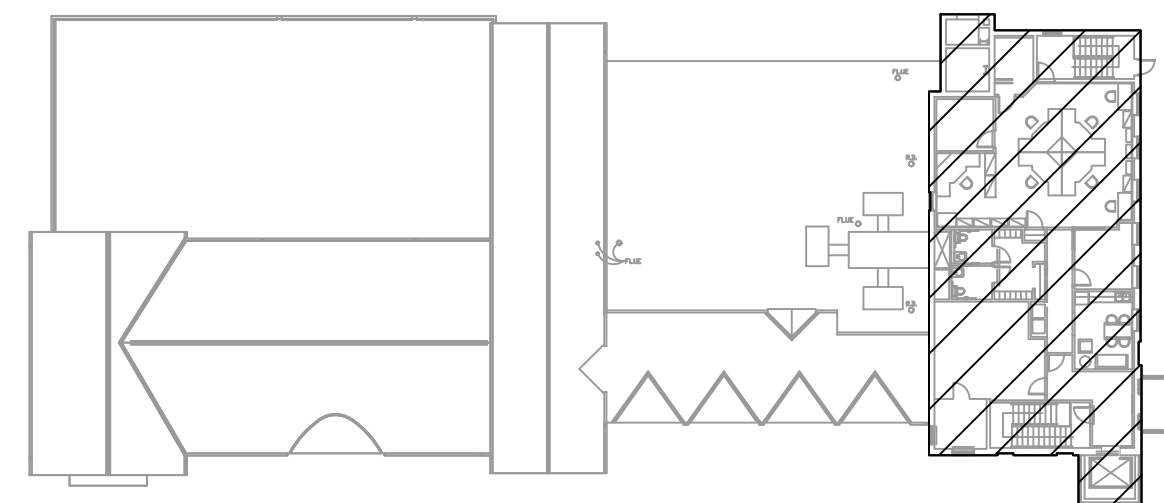
1. REMOVE ALL INDICATED FIXTURES FOR 1:1 REPLACEMENT.
2. ALL EXIT, EGRESS AND EXTERIOR LIGHTING TO REMAIN.
3. ALL NIGHTLIGHTS TO REMAIN AS NIGHTLIGHTS, VERIFY IN THE FIELD.
4. CIRCUITING SHOWN FOR REFERENCE, VERIFY IN THE FIELD.
5. VERIFY EXISTING VOLTAGE OF ALL FIXTURES.
6. COORDINATE QUANTITY OF POWER PACKS AND OTHER LIGHTING CONTROL DEVICES WITH MANUFACTURER. PROVIDE COMPREHENSIVE SYSTEM AS DESCRIBED IN NOTES.
7. ALL SWITCHING DEVICES AND COVERPLATES TO MATCH EXISTING. WHITE IN LIVING QUARTERS, IVORY IN ADMINISTRATION.
8. WIRELESS DEVICES TO BE AC POWERED, DO NOT USE BATTERIES.
9. REUSE ALL EXISTING MOUNTING MEANS TO ENSURE NEW FIXTURE IS MOUNTED AT SAME HEIGHT AS EXISTING FIXTURE.
10. BID TO BE PROVIDED IN THREE (3) SEPARATE NUMBERS, PRICE PER SHEET, E-201, E-202, E-203.

E.O.C./TRAINING ROOM BASEMENT LIGHTING PLAN
SCALE 3/16" = 1'-0"

E.O.C./TRAINING ROOM BASEMENT LIGHTING PLAN CODED NOTES:

- 1 INTEGRAL OCCUPANCY SENSOR IN FIXTURE.
- 2 PROVIDE OCCUPANCY SENSING WALL SWITCH.
- 3 PROVIDE LIGHTING CONTROL WITH THREE (3) 3-WAY SWITCHES PER ROWS OF FIXTURES SHOWN ON PLAN. PROVIDE COMPATIBLE COVERPLATE WITH ELIMINATED GANGS.
- 4 FIXTURE TO REMAIN, PROVIDE LED BULBS.
- 5 EXISTING CONTROLS TO REMAIN.

ALL ITEMS ON THIS SHEET
IS BID ITEM #FS-3



KEY PLAN



6645 Hopkins Rd.

APPROVED: MTD

E-601

LIGHTING FIXTURE SCHEDULE NOTES:

1. THE E.C. SHALL COORDINATE ALL COLORS, FINISHES, LENGTHS, ETC. OF FIXTURES WITH THE ENGINEER AND ACTUAL FIELD CONDITIONS PRIOR TO PLACING PURCHASE ORDER.
2. THE E.C. SHALL COORDINATE ALL TRIMS OF LIGHT FIXTURES WITH CEILING PLANS, EXISTING CONDITIONS, ETC. AND INCLUDE APPROPRIATE TRIM (LAY-IN, DRYWALL, ETC.) IN BASE BID. SUBMISSION OF SHOP DRAWINGS WILL BE INTERPRETED THAT THIS COORDINATION WITH THE ARCHITECT HAS BEEN COMPLETED AND NO ADDITIONAL COMPENSATION WILL BE ALLOWED DUE TO THE LACK OF THIS COORDINATION.

LIGHTING FIXTURE SCHEDULE NOTES:

1. THE E.C. SHALL COORDINATE ALL COLORS, FINISHES, LENGTHS, ETC. OF FIXTURES WITH THE ENGINEER AND ACTUAL FIELD CONDITIONS PRIOR TO PLACING PURCHASE ORDER.
2. THE E.C. SHALL COORDINATE ALL TRIMS OF LIGHT FIXTURES WITH CEILING PLANS, EXISTING CONDITIONS, ETC. AND INCLUDE APPROPRIATE TRIM (LAY-IN, DRYWALL, ETC.) IN BASE BID. SUBMISSION OF SHOP DRAWINGS WILL BE INTERPRETED THAT THIS COORDINATION WITH THE ARCHITECT HAS BEEN COMPLETED AND NO ADDITIONAL COMPENSATION WILL BE ALLOWED DUE TO THE LACK OF THIS COORDINATION.

1. CONTRACTOR SHALL WALK EACH SPACE TO CONFIRM EXISTING LIGHTING LAYOUT AND FIXTURES PRIOR TO ORDER.
2. CONTRACTOR SHALL ADVISE ENGINEER OF ANY DISCREPANCIES THAT ARE NOTED.
3. CONTRACTOR SHALL REVIEW THE NOTED BID ITEMS AND MAKE SURE THE FIXTURES AND AREAS ARE INCLUDED PER THE BIDDING DOCUMENTS AND BIDDING ITEMS.