



MENTOR POLICE DEPARTMENT Monthly Statistics



November 2011

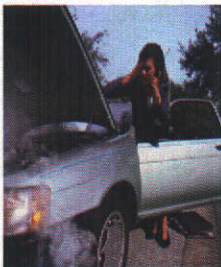
Criminal Offenses and Breakdown By Wards



Traffic Enforcement Data



Motor Vehicle Accident Summary



NOVEMBER
2011

<u>Criminal Offenses and Arrests</u>	NOV 2011	YTD 2011	NOV 2010	YTD 2010	ADULT ARREST NOV'11	ADULT ARREST YTD	JUV. ARREST NOV'11	JUV. ARREST YTD
Murder/Manslaughter (Commit & Attempt)	0	0	0	0	0	0	0	0
Rape/Felonious Sex Assault (Commit & Attempt)	1	9	0	6	0	0	0	1
Robbery	0	22	0	22	2	22	0	0
Burglary / B&E	15	151	9	115	0	27	3	5
Larcenies	93	826	92	937	38	287	4	71
Felonious/Aggravated Assault & Misdemeanor Assault	9	143	3	115	2	39	2	24
Domestic Violence	7	116	6	102	7	92	2	21
Criminal Damage/Mischief & Vandalism	13	211	17	225	0	17	2	12
Drug Offenses	14	199	18	193	16	207	1	18
Other Family Offenses	1	15	1	9	0	3	0	0
TOTALS	153	1,692	146	1,724	65	694	14	152

<u>Criminal Offense Breakdown by Wards</u>	Ward 1	Ward 2	Ward 3	Ward 4
Murder/Manslaughter (Commit & Attempt)				
Rape/Felonious Sex Assault (Commit & Attempt)	1			
Robbery				
Burglary / B&E	4	4	3	4
Larcenies	47	36	7	3
Felonious/Aggravated Assault & Misdemeanor Assault	5	3		1
Domestic Violence	3	2		2
Criminal Damage/Mischief & Vandalism	1	3	5	4
Drug Offenses	7	7		
Other Family Offenses			1	



Traffic & Accident Data

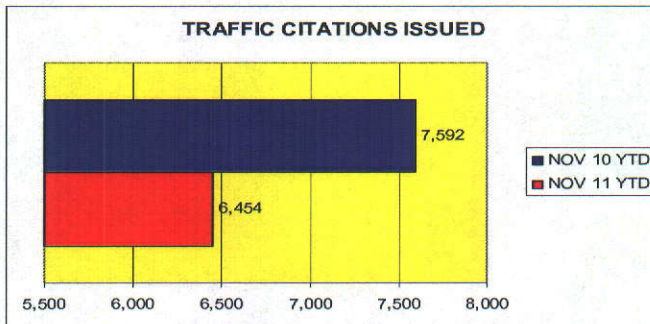


TRAFFIC CITATIONS	NOV 2011	YTD 2011	NOV 2010	YTD 2010
DUI	25	332	27	413
Reckless Operation	0	14	0	13
Traffic Signal	12	180	11	226
Sign/Traffic Control Device	7	114	9	180
Failure to Control	19	154	14	166
Speed	143	2,016	161	2,435
Equipment Violation	0	5	0	27
Seat Belt Violation	69	1,104	65	1,221
Child Restraint Violation	2	18	1	26
License Plate Violation	23	240	21	299
Noise Violation	0	5	1	18
DUS	25	345	37	472
Other O/L Violation	25	240	17	349
All Other	161	1,687	161	1,747
TOTAL:	511	6,454	525	7,592

WRITTEN WARNINGS AND PARKING CITES	NOV 2011	YTD 2011	NOV 2010	YTD 2010
Written Warnings	130	1,754	187	1,932
Parking	104	1,239	122	1,644

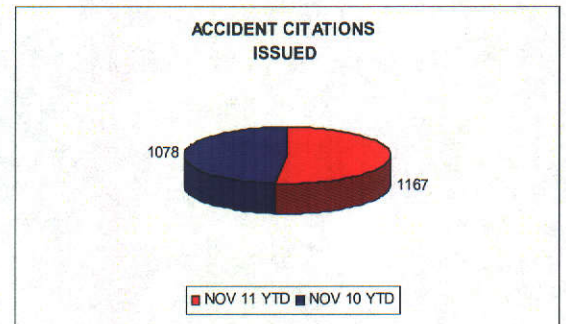
TRAFFIC CITATIONS ISSUED

15% less in 2011



ACCIDENT CITATIONS ISSUED

8% more in 2011



	NOV 2011	YTD 2011	NOV 2010	YTD 2010	PERCENT DIFF
Accidents Involving Injury	43	349	20	315	11%
Accidents Involving Death	1	2	0	2	0%
Accidents Involving Property Damage	149	1249	144	1172	7%
Accidents Unknown**	2	29		24	21%
TOTAL:	195	1629	164	1513	8%
Persons Injured (Including Private Property)	51	422	32	447	-6%
Persons Killed (Including Private Property)	1	4	0	3	33%
Private Property Accidents	48	515	50	521	-1%

**Investigation reveals no injury or property damage, or damage less than \$400-Ohio Traffic Crash Procedure Manual-Rev 11-99