



MENTOR POLICE DEPARTMENT Monthly Statistics



March 2013

Criminal Offenses and Breakdown By Wards



Traffic Enforcement Data



Motor Vehicle Accident Summary



March
2013

<u>Criminal Offenses and Arrests</u>	MAR 2013	YTD 2013	MAR 2012	YTD 2012	ADULT ARREST MAR'13	ADULT ARREST YTD	JUV. ARREST MAR'13	JUV. ARREST YTD
Murder/Manslaughter (Commit & Attempt)	0	0	0	0	0	0	0	0
Rape/Felonious Sex Assault (Commit & Attempt)	3	3	1	2	0	0	0	0
Robbery	2	3	1	5	4	5	0	0
Burglary / B&E	7	27	8	21	1	5	0	3
Larcenies	62	203	85	245	21	77	8	25
Felonious/Aggravated Assault & Misdemeanor Assault	8	16	12	39	2	3	1	4
Domestic Violence	10	23	8	29	8	18	0	1
Criminal Damage/Mischief & Vandalism	11	35	10	34	0	3	0	3
Drug Offenses	35	87	30	75	41	89	7	19
Other Family Offenses	4	7	1	1	1	2	0	0
TOTALS	142	404	156	451	78	202	16	55

<u>Criminal Offense Breakdown by Wards</u>	Ward 1	Ward 2	Ward 3	Ward 4
Murder/Manslaughter (Commit & Attempt)				
Rape/Felonious Sex Assault (Commit & Attempt)		1	1	1
Robbery	1	1		
Burglary / B&E	2	3		2
Larcenies	22	34	5	1
Felonious/Aggravated Assault & Misdemeanor Assault	3		3	2
Domestic Violence	3	2	3	2
Criminal Damage/Mischief & Vandalism	7	1		3
Drug Offenses	15	13	5	2
Other Family Offenses	1	3		



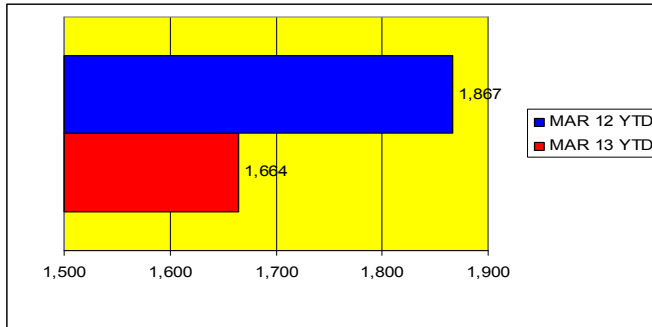
Traffic & Accident Data

TRAFFIC CITATIONS	MAR 2013	YTD 2013	MAR 2012	YTD 2012
DUI	42	90	38	93
Assured Clear Distance	43	106	41	125
Reckless Operation	0	0	0	0
Traffic Signal	20	66	21	74
Sign/Traffic Control Device	18	60	19	50
Failure to Control	11	42	15	69
Speed	213	503	204	525
Equipment Violation	2	5	0	0
Seat Belt Violation	76	223	94	281
Child Restraint Violation	2	7	2	7
License Plate Violation	34	82	31	68
Noise Violation	0	0	1	1
DUS	35	109	49	127
Other O/L Violation	30	75	35	79
All Other	103	296	120	368
TOTAL:	629	1,664	670	1,867

WRITTEN WARNINGS AND PARKING CITES	MAR 2013	YTD 2013	MAR 2012	YTD 2012
Written Warnings	130	377	191	456
Parking	40	124	77	206

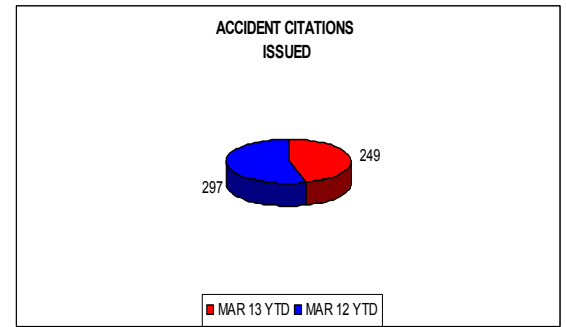
TRAFFIC CITATIONS ISSUED

11% less in 2013



ACCIDENT CITATIONS ISSUED

16% less in 2013



	MAR 2013	YTD 2013	MAR 2012	YTD 2012	PERCENT DIFF
Accidents Involving Injury	26	66	31	81	-19%
Accidents Involving Death	0	0	0	0	0%
Accidents Involving Property Damage	99	286	86	326	-12%
Accidents Unknown**	0	0	1	8	-100%
TOTAL:	125	352	118	415	-15%
Persons Injured (Including Private Property)	28	65	39	78	-17%
Persons Killed (Including Private Property)	0	0	0	0	0%
Private Property Accidents	44	125	45	138	-9%

**Investigation reveals no injury or property damage, or damage less than \$400-Ohio Traffic Crash Procedure Manual-Rev 11-99