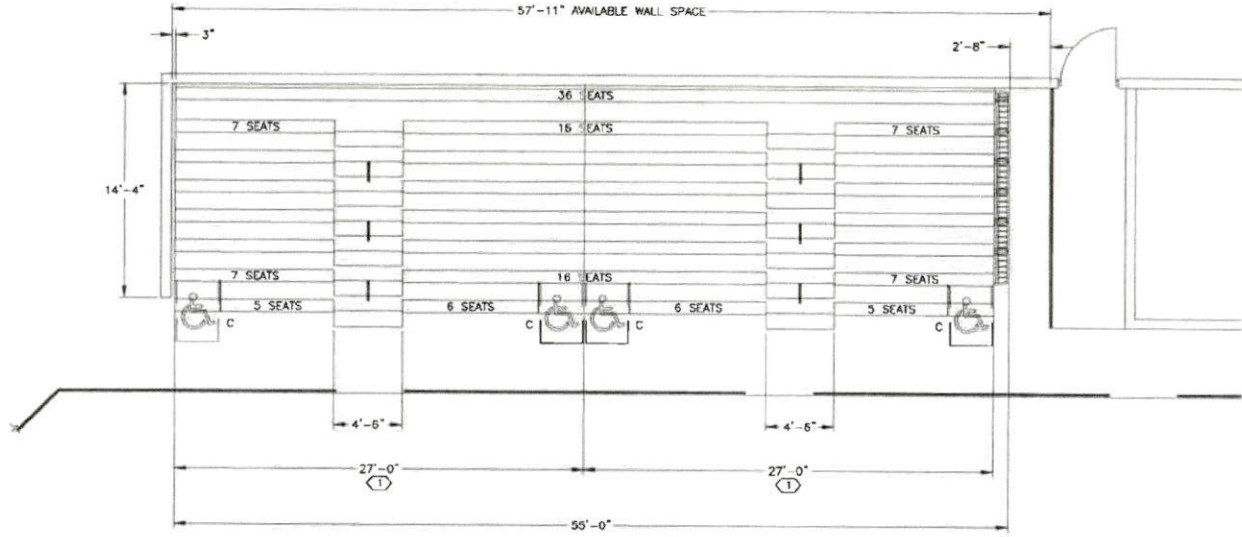


IMPORTANT NOTE REGARDING ACCESSIBILITY COMPLIANCE
 THE BUILDING CODE REQUIRES THAT A DEFINED NUMBER OF ACCESSIBLE SEATING LOCATIONS WITH COMPANION CHAIRS, BE INTEGRATED INTO THE SEATING BANK. ON THE LAYOUTS PROVIDED, 3 ACCESSIBLE SEATS ARE REQUIRED; 2 ARE PROVIDED. THE REMAINING REQUIRED ACCESSIBLE LOCATIONS ARE TO BE PROVIDED ELSEWHERE IN THE SEATING SPACE. APPROVAL OF THIS SUBMITTAL ACKNOWLEDGES THESE REQUIREMENTS.



NOTE:
 PLEASE VERIFY CODE AND SMOKE PROTECTION

SEATING LAYOUT NOTE:
 SEATING LAYOUT HAS BEEN DESIGNED & VERIFIED BASED ON THE CODE RELATED UNDER THE GENERAL NOTES, CHANGES MAY NEED TO BE MADE IF A NEW CODE IS REQUIRED.

BANK A
 248 SEATS ON STAND, MAX. CAPACITY
 230 SEATS ON STAND, AS SHOWN

POWER SPECIFICATIONS

POWER SUPPLY DETAIL (STANDARD)

MANUAL LOCKING DISCONNECT NON-FUSED (BY E.C.) SEATING POWER SUPPLY (BY E.C.) SEE ELECTRICAL SPECIFICATIONS

CONTROL BOX PROVIDED BY HSC & TO BE 5'-0" (1524) ABOVE FLOOR. (CONNECTION BY E.C.)

ELECTRICAL SPECIFICATIONS:

EACH MOTOR: 1/2HP, 120/208V, THREE PHASE, 1.25 SERVICE FACTOR
 REF. INTEGRAL POWER SUMMARY CHART FOR QUANTITIES.
 POWER SUPPLY: (SUPPLIED BY ELECTRICAL CONTRACTOR)(E.C.)
 120/208 VOLTS, 20 AMPS, 3 PHASE, 4 CONDUCTORS + GROUND
 MAXIMUM ALLOWABLE FULL LOAD VOLTAGE DROP IS 4 %

ACCESSORIES	
1. 1ST TIER INTEGRAL POWER: W/PENDANT CONTROL SUPPLY	13.
2. 2 - FOOT LEVEL AISLES WITH NON-SLIP TREAD INTERMEDIATE AISLE STEPS	14.
3. 2 - REMOVABLE FRONT STEPS WITH NON-SLIP TREAD	15.
4. AISLE RAIL(S) MAXIMIZE ABAR	16.
5. 1 - SELF STORING MAILED ENDS	17.
6. COURTSIDE 10" SEATS	18.
7. FLEX ROWS	19.
8.	20.
9.	21.
10.	22.
11.	23.
12.	24.

FINISH SCHEDULE: COURTSIDE 10"	
SEAT	T.B.D.
SEAT PANEL(S)	FRONT: N/A REAR: N/A
PREMIA FINISH	N/A
PAINTS	BLACK
PANELS	FRONT: N/A REAR: N/A END: N/A
END CURTAINS	N/A
CONTOLAR PLASTIC BACKREST	N/A
DECKING (MEMBR)	5/8" (16) AC PLYWOOD WITH 2 COATS OF CLEAR POLYURETHANE
DECKING (WAMPLIS)	N/A
UNDERSTRUCTURE	BLACK ALLOY CHANNEL
NOSE & REAR RISER	SILVER ZINC ALLOY MATTE

HUSSEY SEATING
 YOUR PARTNER FOR SEATING SOLUTIONS
 38 BIER STREET EXT.
 NORTH BERWICK, ME 03906
 TELEPHONE: (207) 876-2271 FAX: (207) 876-9815

IMPORTANT
 THIS PLAN HAS BEEN DRAWN IN ACCORDANCE WITH THE INFORMATION SUPPLIED BY THE ARCHITECT, AND/OR DEALER. HUSSEY SEATING CO. DOES NOT ACCEPT ANY RESPONSIBILITY FOR THE ACCURACY OR RELIABILITY SHOULD THERE BE ANY DEVIATION FROM THE INFORMATION SUPPLIED WITHOUT THE APPROVAL OF HUSSEY SEATING CO.

GENERAL NOTES

- DEALER WILL VERIFY ALL DIMENSIONS AND INFORMATION SHOWN. INSURE THAT ALL FIELD CHECKED INTERMEDIATE DIMENSIONS EQUAL THEIR CORRESPONDING OVERALL DIMENSION, AND RETURN THIS DRAWING WITH THE APPROPRIATE SIGNATURES FOR FURTHER ACTION.
- HUSSEY SEATING CO. WILL ASSUME RESPONSIBILITY FOR MANUFACTURING AND SHIPPING THE PRODUCT ACCORDING TO THIS DRAWING AND APPROVAL.
- THE ARCHITECT, GENERAL CONTRACTOR AND OWNER WILL ENSURE THAT FLOORING IS LEVEL WITHIN 1/8" (3) IN 6'-0" (2438) AND THAT THE FLOORING IS CONTINUOUS.
- THE LAYOUT SHOWN IS DRAWN PER HUSSEY SEATING CO. INTERPRETATION OF IBC 2018. IN A BUILDING THAT IS NOT SMOKE PROTECTED PLEASE VERIFY IF NO OTHER CODE IS INDICATED, IT IS ASSUMED THAT THE DEALER/ARCHITECT IS AWARE OF THE CODE APPLIED TO THE LAYOUT SHOWN, AND THAT HUSSEY SEATING CO. CANNOT BE HELD RESPONSIBLE IF ANY VIOLATION OCCURS.
- HUSSEY SEATING COMPANY STRIVES TO CONTINUOUSLY IMPROVE ITS PRODUCT AND MANUFACTURING METHODS. THE COMPANY RESERVES THE RIGHT TO MAKE CHANGES WITHOUT NOTICE WHEN, IN THE OPINION OF THE COMPANY, SUCH CHANGES IMPROVE THE PRODUCT OR ITS PERFORMANCE.

BANK SUMMARY

BANK: A
 MODEL: M8028
 STAND TYPE: WALL ATTACHED
 ROWS: 11 5/8"
 ROW SPACING: 24"
 TIERS: 9
 NET SEAT QTY: 248

REV.	DATE	DESCRIPTION

NOT FOR CONSTRUCTION

PRELIMINARY

HUSSEY SEATING CO.

NOT FOR CONSTRUCTION

FIELD SUMMARY (REQUIRED BY FIELD CHECK)
 FLOOR CONSTRUCTION: T.B.D.
 WALL CONSTRUCTION: T.B.D.
 ATTACHMENT TYPE: T.B.D.

Field Check: _____ Approved: _____
 By: _____ Date: _____ By: _____ Date: _____

PLAN OF SEATING: BANK A
 MENTOR ICE ARENA
 MENTOR, OH

DRAWN BY: L/COURTOIS DATE: 8/29/2018
 CHECK BY: MLB DATE: 8/5/2018

SCALE: AS NOTED
 MODIFIED: 8/8/2018 11:09 AM
 PLOTTED: 8/8/2018 11:09 AM

CAD NO. Q418901_OPT1 DRAWING NO. FP01